

iTero®
www.itero.com



To schedule a demonstration
go to www.itero.com

Align Technology, Inc.
2560 Orchard Parkway
San Jose, California 95131

INVISALIGN, CLINCHECK, and ITERO, among
others, are trademarks and/or service marks of
Align Technology, Inc. or one of its subsidiaries
or affiliated companies and may be registered
in the U.S. and/or other countries.

© 2013 Align Technology, Inc. M20236 Rev A

iTero®



DRIVEN BY INTUITION.
DEFINED BY PRECISION.
POWERED BY LOGIC.™

for Orthodontists



What is iTero®?

iTero is more than an image, it's an impression. It's the intuitive operation and ease-of-use that's infused into our scanner. It's the sense of confidence that comes from offering your patients the utmost in digital precision. It's the efficiency and flexibility of open source imaging and streamlined workflow. And it's the inherent sense of satisfaction that comes from a beautifully completed case.

INTUITIVE INPUT, PRECISION OUTPUT

Every aspect of the iTero® imaging system has been engineered so it's easy enough to master quickly, yet powerful enough to meet all your needs. It's simple... it's iTero.

The Upside of a High-Tech Chair-side Experience

iTero nearly eliminates all those outdated impression processes that cause you fits, and cause your patients to gag. In their place, iTero offers precision imaging that enhances accuracy and improves final outcome without the mess. Where traditional impressions can bubble, tear or distort, iTero eliminates these physical flaws. And unlike other systems that require you to coat the teeth with powder, iTero offers you the simplicity of a powder-free, single-person, point-and-capture procedure.



Imaging Made Effortless

The intuitive software and real-time digital display use voice prompts to talk you through each scan. Simple eraser and hole detection tools empower you to fine-tune your image prior to sending, creating a more precise orthodontic impression.

The ROI* in iTero®

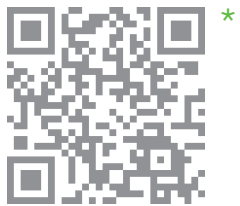
By reducing the costs and staff time associated with a physical impression, cutting retake appointments and decreasing doctor

time spent evaluating Clincheck® set-ups, iTero gives you a tangible ROI from day one¹. But don't underestimate the growing value of a patient-to-patient referral. A recent study by the Levin Group suggested that patients whose impressions are taken with iTero are 63% more likely to refer a new patient to your practice². Added to the way orthodontic patients (and their parents) chat about their experiences, iTero provides you the opportunity to develop a significant referral stream.

With the lifetime value of an orthodontic patient compressed into

an average 12-24 month window, word of mouth referrals are essential. iTero is the logical way to create a true point of differentiation between you and the competition.

While your costs will vary, here's an example of the tangible financial benefits offered by iTero intraoral imaging.



www.aligntech.com/iTeroROI



The Next Logical Step

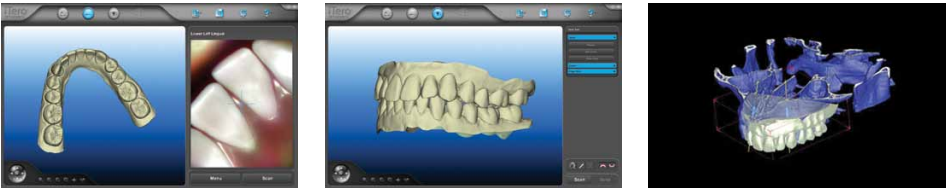
The completion of your scan is just the start of what iTero® does for you. Unlike other systems that dictate your post-scan options, iTero puts you in control with the workflow selections that suit you best. Our open source image file can be used by CAD/CAM equipped labs (or practices) and iTero models can be used by every lab. Because giving you the ability to choose is the ultimate expression of logic.

SAVINGS AS EARNINGS

Eliminating PVS retakes	\$44.45 per retake³
Reducing digital model expense	\$19.95 per digital record⁴

INVISALIGN REFERRALS AS REVENUE

Average iTero/Invisalign generated referrals	2/month⁵
Average value of a new Invisalign patient	\$3,401⁶
Average yearly value	\$81,624



FEATURES THAT IMPRESS

If you're sold on digital impressions, our features will impress you and your staff:

Powder-Free	Yes
Scanning Technique	Wand can hover or rest on teeth
Operation	One-hand scanning by a single operator
Centralized Model System	Precision milled models available
Compatibility	Open STL file can be used with any lab with an open CAD/CAM system





iTero® for Invisalign® Practices

If you're an Invisalign provider, or are planning on becoming one, then iTero intraoral imaging is a natural fit. Invisalign cases started with an iTero scan experience seven times fewer fit issues⁷ than those started with a traditional impression⁸. By eliminating shipping delays, ClinCheck® treatment plans using iTero scans typically are posted 50% faster than for cases using PVS impressions⁹. Not only that, impressions generated with iTero have 10X fewer rejections compared to PVS based impressions¹⁰. Best of all, your Invisalign patients will be sure to share their "gag free" experience with friends, family and colleagues.

A Logical Tool for Patient Communication

Leverage your iTero scanner as a chair-side platform for enhanced patient communication and education, and to drive acceptance of Invisalign treatment. With the Invisalign Outcome Simulator* it's easy to show your patient the benefits of Invisalign treatment.

- Simulated outcome starts with an iTero scan and may be run chair-side on your iTero scanner or in a consult room using your computer via myaligntech.com
- A dual view layout shows the patient's current dentition next to their simulated final position
- Intuitive tools allow real-time refinements to the simulated outcome

Digitized Orthodontic Workflow Options

iTero's digitized workflow affords you a great deal of flexibility. Whether it's an Invisalign case, traditional orthodontics, appliance or retainer, you can select the workflow option that's best for each individual case.

¹ The Cutting Edge by Dr. Garino and Dr. Garino, JCO VOLUME XLVI NUMBER 2
² Independent Study conducted in 2011 by the Levin Group
³ Data on file at Align Technology, Inc.
⁴ Data on file at Align Technology, Inc.
⁵ Independent Study conducted by Quattro Research Group
⁶ Estimated patient revenue (\$5,000) minus Invisalign treatment cost (\$1,599)
⁷ Based on analysis of 400,000+ Invisalign cases
⁸ Based on analysis of 400,000+ Invisalign cases
⁹ Based on analysis of 193,000+ Invisalign cases
¹⁰ Based on analysis of 170,000+ Invisalign cases



* This application is available for Invisalign customers with an iTero scanner.